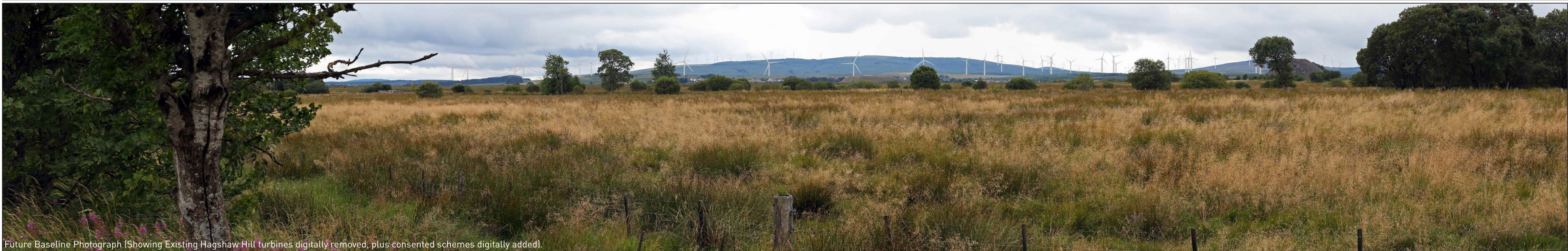




Baseline Photograph



Future Baseline Photograph (Showing Existing Hagshaw Hill turbines digitally removed, plus consented schemes digitally added).

**Figure 6.35 (sheet A)**  
**Viewpoint 4: B7078 south of Lesmahagow**  
**HAGSHAW HILL WIND FARM REPOWERING**



**Viewpoint Information**  
**OS Reference:** E 283120, N 637377  
**Ground level:** 215m (AOD)

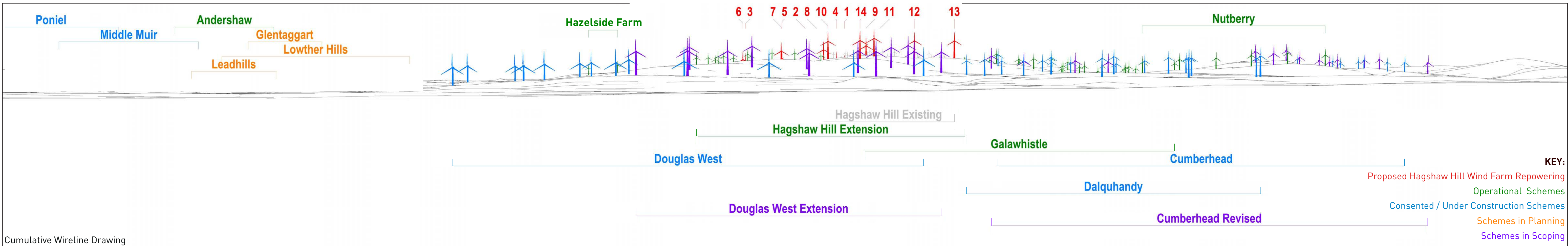
**Distance to nearest turbine:** 7049mm (T14)  
**Bearing to centre of photograph:** 205.8°

**Angle of view:** 90° [cylindrical]  
**Principal distance:** 500mm

**Camera:** Canon EOS 5D Mark III  
**Lens:** 50mm Fixed Focal Lens  
**Height:** 1.5m  
**Date & Time:** 06/08/2018 14:45



Future Baseline Photograph (Showing Existing Hagshaw Hill turbines digitally removed, plus consented schemes digitally added).



Cumulative Wireline Drawing

**Figure 6.35 (sheet B)**  
**Viewpoint 4: B7078 south of Lesmahagow**  
**HAGSHAW HILL WIND FARM REPOWERING**

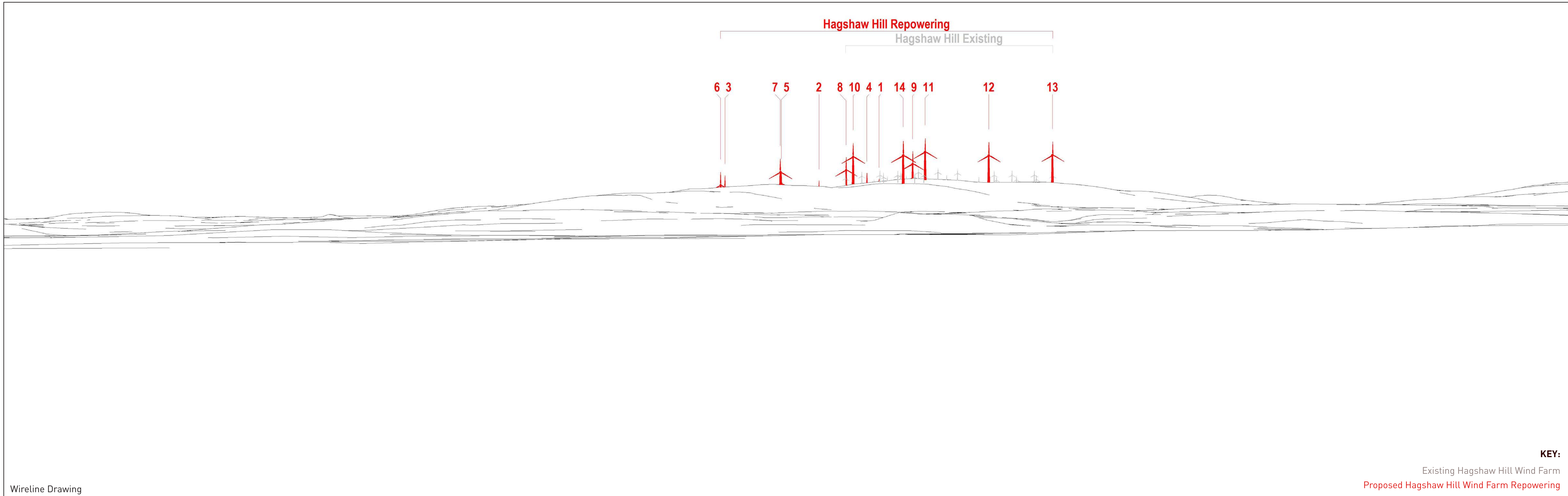


**Viewpoint Information**  
 OS Reference: E 283120, N 637377  
 Ground level: 215m (AOD)

**Distance to nearest turbine:** 7049mm (T14)  
**Bearing to centre of photograph:** 205.8°

**Angle of view:** 90° [cylindrical]  
**Principal distance:** 500mm

**Camera:** Canon EOS 5D Mark III  
**Lens:** 50mm Fixed Focal Lens  
**Height:** 1.5m  
**Date & Time:** 06/08/2018 14:45



Wireline Drawing

**KEY:**

Existing Hagshaw Hill Wind Farm  
 Proposed Hagshaw Hill Wind Farm Repowering

**Figure 6.35 (sheet C)**  
**Viewpoint 4: B7078 south of Lesmahagow**  
 HAGSHAW HILL WIND FARM REPOWERING



**Viewpoint Information**  
 OS Reference: E 283120, N 637377  
 Ground level: 215m (AOD)

**Distance to nearest turbine:** 7049mm (T14)  
**Bearing to centre of photograph:** 205.8°

**Angle of view:** 53.5° (planar)  
**Principal distance:** 812.5mm  
**Paper size:** 841 x 297 mm (half A1)  
**Correct printed image size:** 820 x 260mm

**Camera:** Canon EOS 5D Mark III  
**Lens:** 50mm Fixed Focal Lens  
**Height:** 1.5m  
**Date & Time:** 06/08/2018 14:45



Photomontage (showing Future Baseline View and Hagshaw Hill Wind Farm Repowering)

**Figure 6.35 (sheet D)**  
**Viewpoint 4: B7078 south of Lesmahagow**  
HAGSHAW HILL WIND FARM REPOWERING



**Viewpoint Information**  
**OS Reference:** E 283120, N 637377  
**Ground level:** 215m (AOD)

**Distance to nearest turbine:** 7049mm (T14)  
**Bearing to centre of photograph:** 205.8°

**Angle of view:** 53.5° (planar)  
**Principal distance:** 812.5mm  
**Paper size:** 841 x 297 mm (half A1)  
**Correct printed image size:** 820 x 260mm

**Camera:** Canon EOS 5D Mark III  
**Lens:** 50mm Fixed Focal Lens  
**Height:** 1.5m  
**Date & Time:** 06/08/2018 14:45